

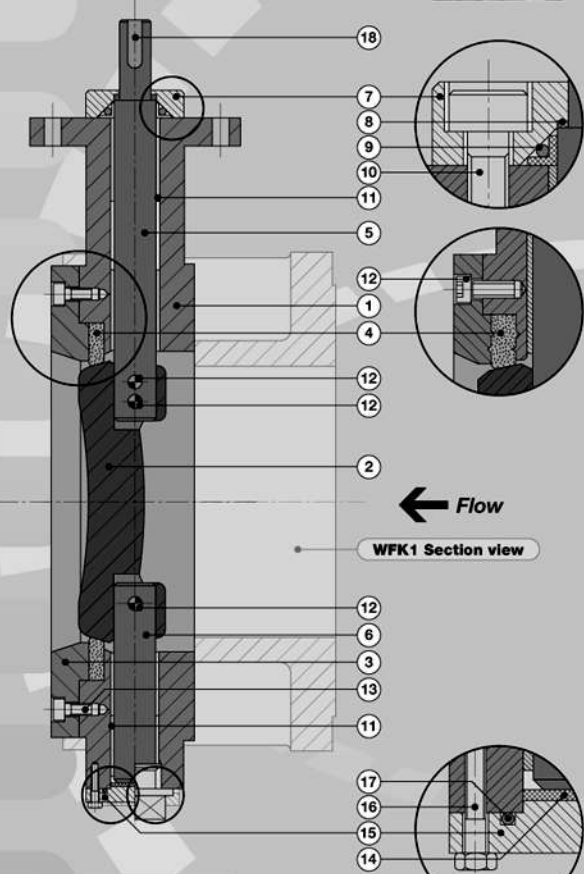
- Series
- WK1
  - WK1/M
  - WLK1
  - WLK1/M
  - WFK1
  - WFK1/M

**Identification**  
of the valve parts

Pos.	Description Item	Q.ty
1	Body	1
2	Disc	1
3	Seal seat retainer	1
*4	Seal seat	1
5	Upper stem	1
6	Lower stem	1
7	Gland	1
*8	Thrust washer	1
*9	Stem seal	1
10	Screw	~
11	Bushing	~
12	Pin	3
13	Screw	~
*14	Thrust washer	~
15	Cap	~
16	Screw	~
*17	O-ring	1
18	Feather	1

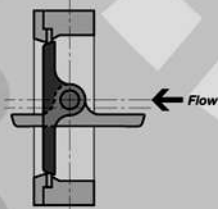
(\*) Normally recommended spare parts  
(-) Related to valve size

WK1 Section view



WFK1 Section view

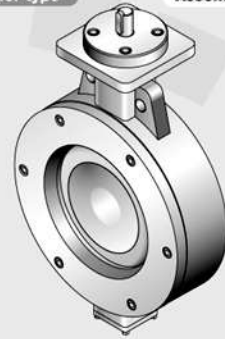
Double eccentric detail



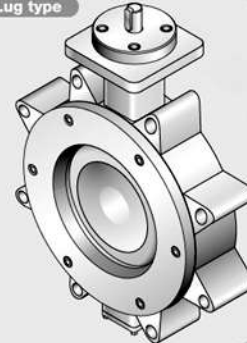
Size over 10"

Size up to 8"

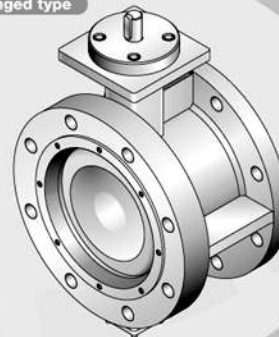
Wafer type Assembled views



Lug type



Flanged type



Assembly view

WK1  
WK1/M

